



SPATTERN Webinar

on Spa Settlements and
Thermal Heritage

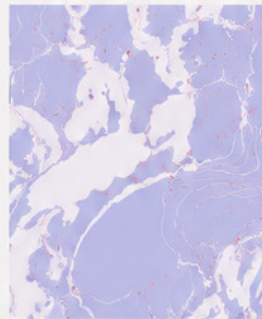
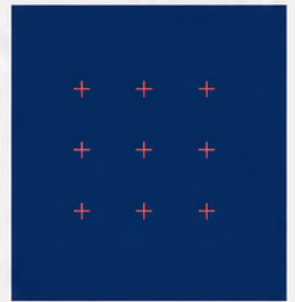
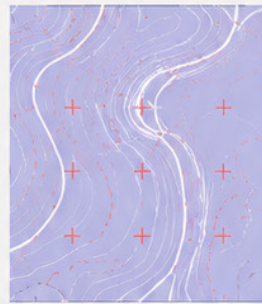
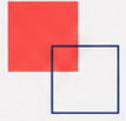
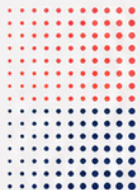
■ 2nd June 2026

BOOK OF

ABSTRACTS
+ **PROJECTS**



organized by
University of Belgrade -
Faculty of Architecture



IMPRESUM

TITLE

SPATTERN Webinar:
Book of Abstracts + Projects

EDITORS

Aleksandra Milovanović,
Mladen Pešić

PUBLISHER

University of Belgrade,
Faculty of Architecture

FOR PUBLISHER

Vladimir Lojanica, Dean

EDITORIAL AND DESIGN LAYOUT

SPATTERN Team

PLACE AND YEAR

Belgrade / 2026

ISBN-978-86-7924-403-1

SCIENTIFIC BOARD

Aleksandra Milovanović,
Mladen Pešić,
Stefan Janković,
Verica Krstić,
Jelena Ristić Trajković,
Milica Milojević,
Ana Nikezić,
Vladan Đokić

ORGANIZING BOARD

Aleksandra Milovanović,
Mladen Pešić



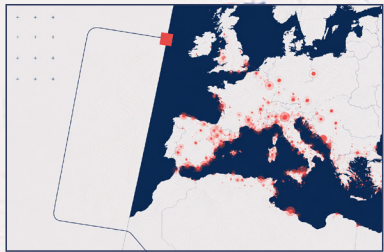
Disclaimer: This publication is supported by the Science Fund of the Republic of Serbia, Grant No. 7408, *Future Heritage of Spa Settlements: Digital Platform for Advancing Knowledge and Innovation in Urban Morphology Approach for Environmentally-Sensitive Development in Serbia - SPATTERN.*

The SPATTERN Consortium is solely responsible for the content of this document, and this content does not express the views of the Science Fund of the Republic of Serbia.

11:00–11:10

- Opening Remarks and Introduction
- Welcome note

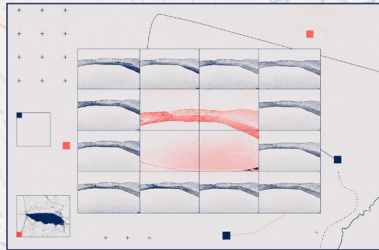
01 SESSION 1
Historical, Cultural and Spatial Perspectives



11:10–11:25

Healing Spas in Antiquity and Thermascape: Delving into the Origin and Development of Ancient Thermalism up to the Present Day

Silvia González-Soutelo,
Laura García-Juan



11:25–11:40

LOUTROTOPOS: Critical Mapping and Visual Narration of Thermal Springs in the Hellenic Territory

Georgia Touliatou



11:40–11:55

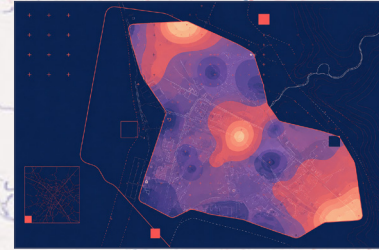
Transformations in the Architecture and Spatial Planning of Spa Towns in South-Western Poland in the European Context (1945-1989)

Damian Zając

11:55–12:15

- Break

02 SESSION 2
Contemporary Approaches and Future Perspectives



12:15–12:30

Therapeutic Landscapes in Spa Environments: Reframing the Health-Promoting Value of Spa Places

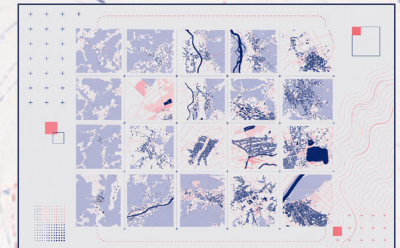
Jana Walterová



12:30–12:45

Govora Heritage Lab

Irina Leca, Radu Tîrcă and Ștefania Tîrcă



12:45–13:00

Future Heritage of Spa Settlements: Digital Platform for Advancing Knowledge and Innovation in Urban Morphology Approach for Environmentally-Sensitive Development in Serbia

Aleksandra Milovanović

13:00–13:30

Open Discussion +
Questions and comments

13:30–14:30

Closed Session: Possibilities for Future Collaboration +
(session for project representatives)

AGENDA

SPATTERN Webinar
on Spa Settlements
and Thermal Heritage

2nd June 2026
(CET Time)

SPATTERN Webinar on Spa Settlements and Thermal Heritage

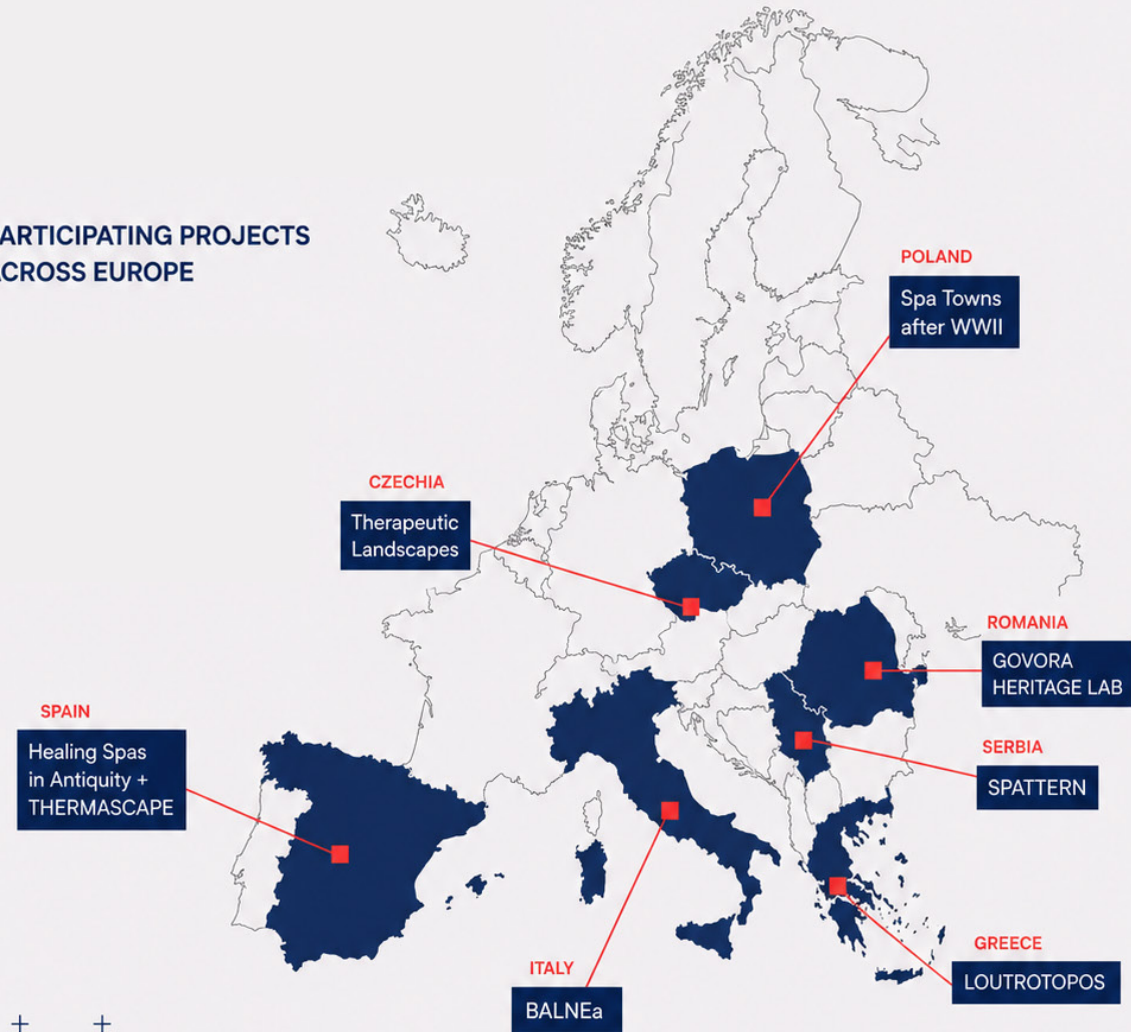
The University of Belgrade - Faculty of Architecture, within the framework of the SPATTERN research project, is organizing the **international webinar SPATTERN Webinar on Spa Settlements and Thermal Heritage**, which will be held online on 2 June 2026.

The webinar is conceived as an international research forum dedicated to contemporary perspectives on spa settlements, thermal heritage, and the multiple relationships between landscape, health, culture, and urban development. Bringing together researchers and projects from several European countries, the event aims to open a dialogue on methodological approaches, spatial transformations, heritage interpretation, and future development frameworks related to thermal environments and spa territories.

The webinar will gather representatives of ongoing international initiatives and research projects from Spain, Italy, Greece, Poland, Romania, Czech Republic and Serbia, **creating a platform for comparative exchange and future collaboration.**

The program is structured through two thematic sessions. **The first session** will focus on historical, cultural, and spatial perspectives on thermal landscapes and spa environments, while **the second session** will address contemporary approaches, urban transformation processes, and future-oriented research and digital methodologies. The webinar will conclude with a closed discussion session among project representatives dedicated to exploring possibilities for future networking, consortium building, and joint international funding initiatives. The webinar represents one of the activities through which the SPATTERN project continues to develop international scientific exchange and comparative research on spa settlements as complex urban, environmental, and cultural systems.

■ PARTICIPATING PROJECTS ACROSS EUROPE

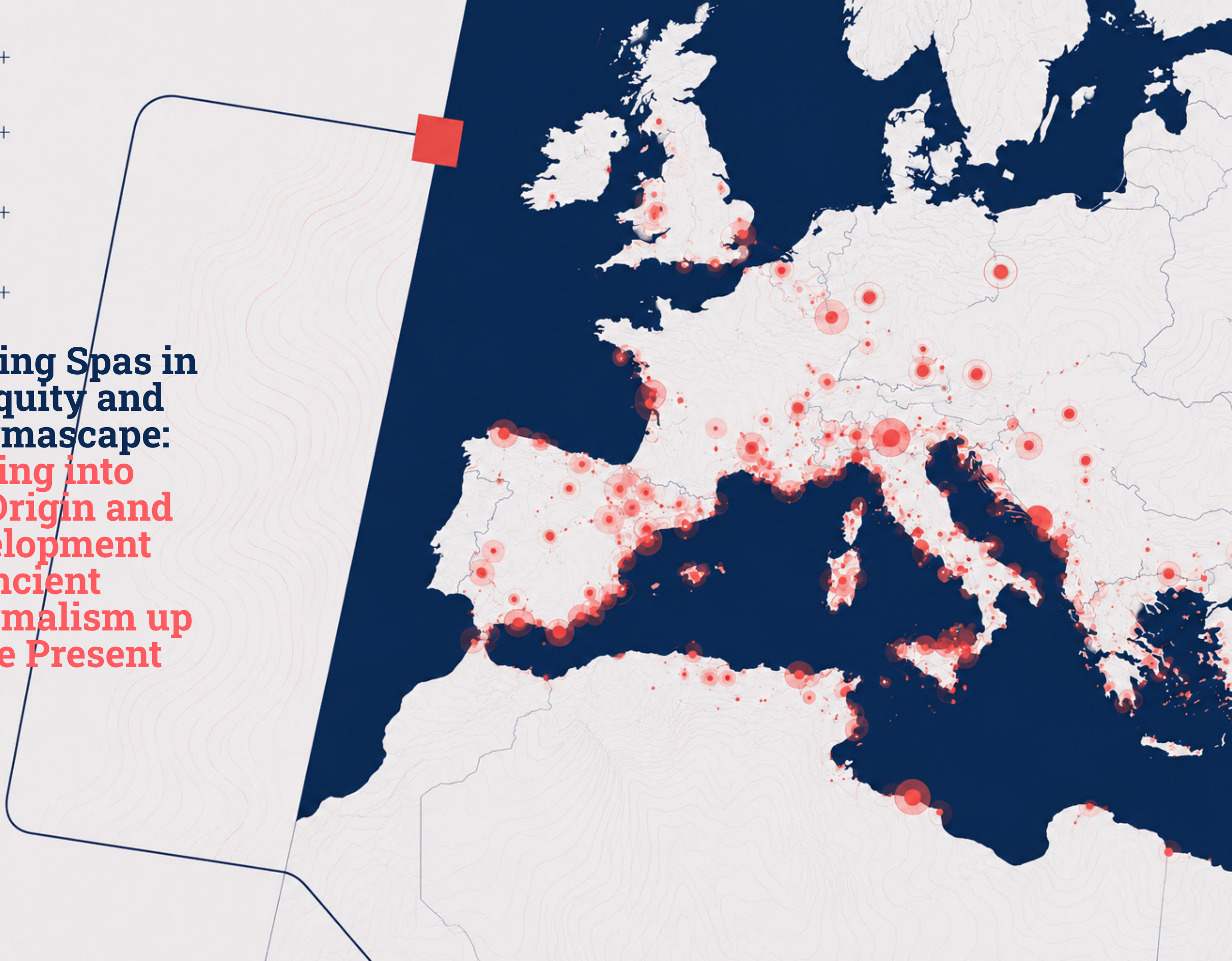


+ + +
+ + +
+ + +

+ + +
+ + +
+ + +

+ +
+ +
+ +
+ +

**Healing Spas in
Antiquity and
Thermascape:
Delving into
the Origin and
Development
of Ancient
Thermalism up
to the Present
Day**



Healing Spas in Antiquity and Thermascape: Delving into the Origin and Development of Ancient Thermalism up to the Present Day

Authors

Silvia González-Soutelo
Laura García-Juan

Institution

Universidad
Autónoma de Madrid,
Spain

Funding

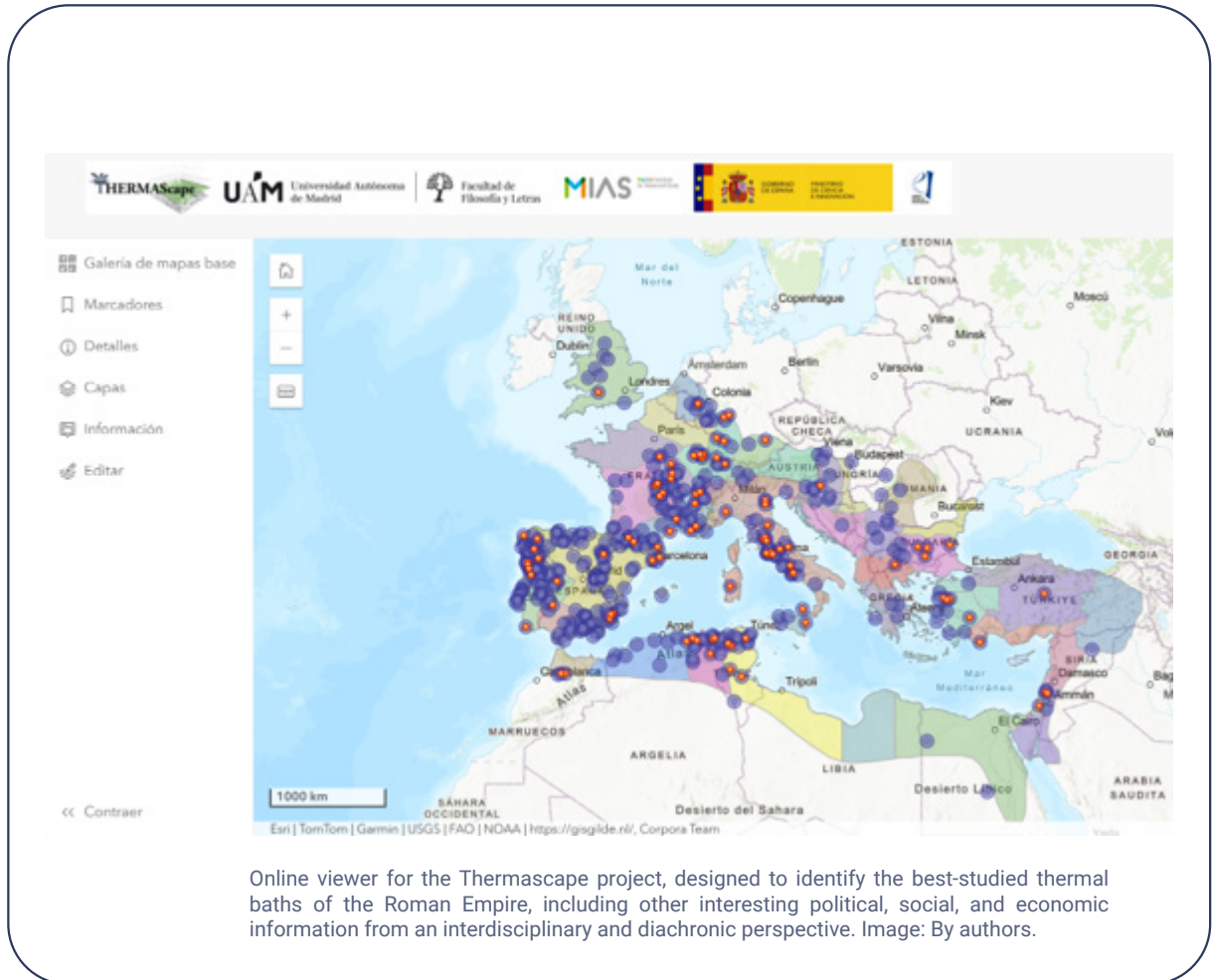
UAM/MIAS project "Healing spas in Antiquity: analysis of Roman thermalism from an architectural and functional point of view" (2018-2023)

Spanish National project "THERMASCAPE. The thermal landscape in Hispania. The role of thermal spas in the Iberian Peninsula since Roman Age" (PID2022-138809NB-I00) (2023-2027)

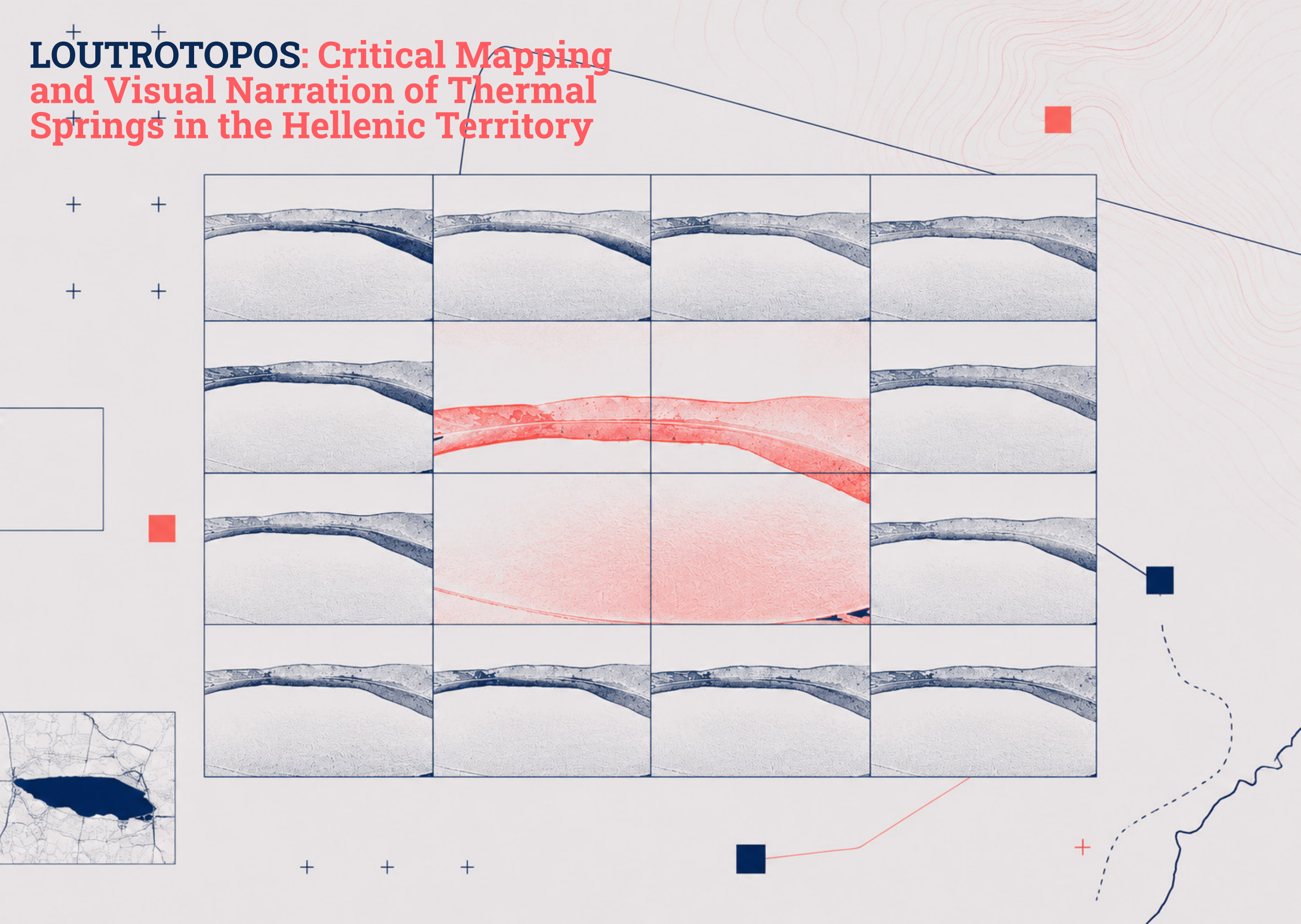
When studying the origins of modern spas, the same confusion frequently arises from not considering the type of water used in each case. Indeed, the use of mineral-medicinal waters requires precise knowledge of their intrinsic characteristics (temperature, composition, location, geological and medical aspects, etc.), as well as the extrinsic characteristics related to the ancient devotion to the deities associated with these springs.

Within the framework of different research projects, we are working on create a solid knowledge base on the main characteristics of the historical use of these waters from the perspective of classical sources, as well as archaeology, architecture, hydrogeology, medical hydrology, and historical and social geography, allowing us to recognize the role of spas in the region since ancient times.

The proposal involves an interdisciplinary and international investigation that raises the need to develop these issues from a comprehensive understanding of the thermal phenomenon, far removed from myths or confusions with other types of bathing establishments, highlighting the millennia-old experience in the evolution of these spaces and facilitating the construction of a future for thermal towns from a more sustainable perspective, as a useful key to promote the development of very different territories.



LOUTROTOPOS: Critical Mapping and Visual Narration of Thermal Springs in the Hellenic Territory



LOUTROTOPOS: Critical Mapping and Visual Narration of Thermal Springs in the Hellenic Territory

Authors

Georgia Touliatou

Institution

University of West Attica,
Faculty of Applied Arts
& Culture, Department of
Interior Architecture,
Greece

Funding

*Funded by the Hellenic
Foundation for Research and
Innovation and implemented
by the Department of Interior
Architecture at the University
of West Attica, Athens,
Greece.*

The research began with a survey of locations with thermal resources across the Greek territory, based on a registry compiled by the Association of Municipalities with Thermal Springs of Greece. A total of 125 springs are recorded across both databases. The “official” mapping does not coincide with other “unofficial” approaches, which argue that the total number of thermal springs is significantly higher.

The research acknowledged that the procedures through which a spring is certified as “thermal” are complex. Multicriteria Evaluation began with the organization of the 125 Loutrotopoi (thermal locations) into the 13 regions of Greece and the formulation of evaluation criteria. In total, 18 criteria were established, addressing geographical, historical, architectural, urban, social, economic, medical, developmental, and perceptual parameters, as well as each site’s connectivity with its wider context.

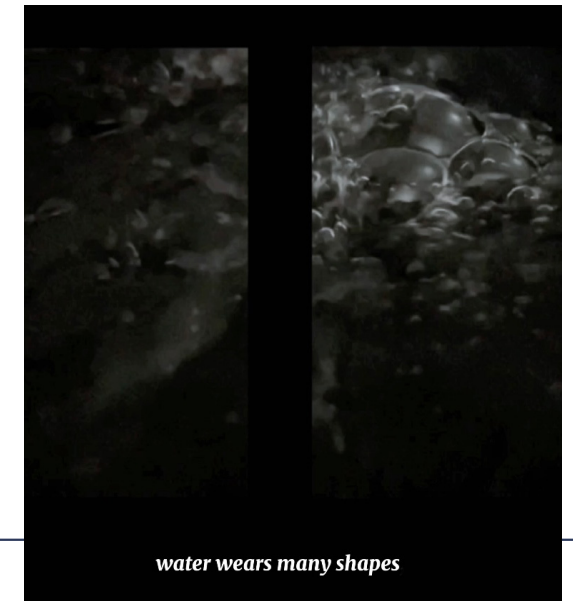
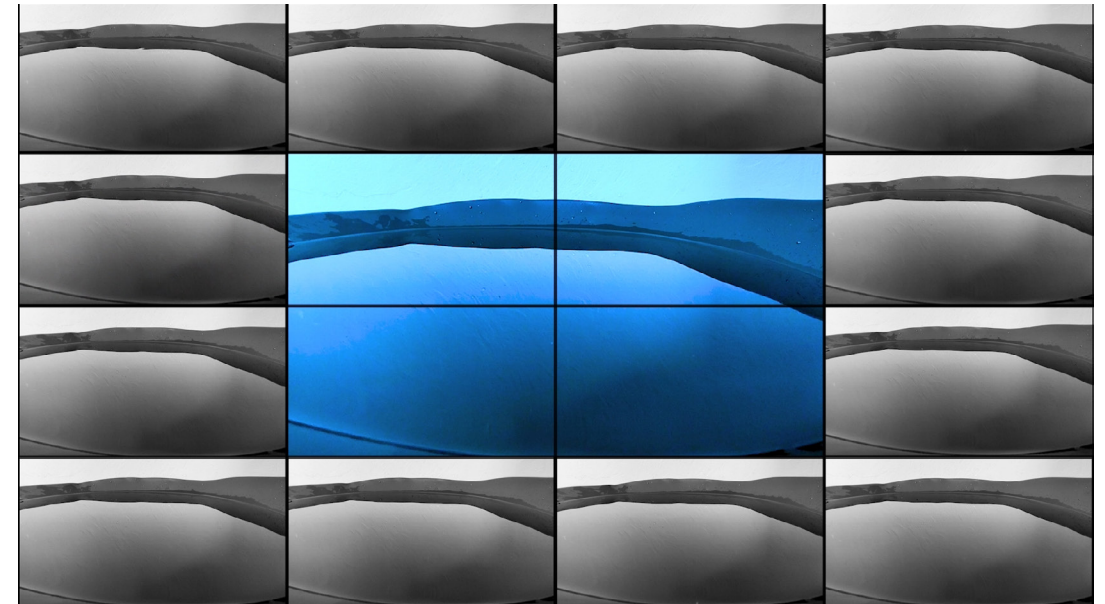
The objective aligns within the regional planning policies for remote places in the Hellenic periphery, based on the preservation of the cultural identity and the promotion of endogenous local resources, with an appreciation to the fact that thermal springs are geographical places with a unique physiognomy and developmental potentialities.

The goal of the project is to promote the unique identity of the “Loutrotopos” to a national and international level, therefore, workshops, public events, art shows and scientific publications were planned.

All processes of the research project, applied to a case study, will ultimately formulate an exemplary method, which will be modeled to constitute a research navigator for the research

and promotion of any other “Loutrotopos”. The research axes are namely, Ontology, Epistemology, Methodology and Method.

Critical cartography and deep mapping practices combined with digital visual media, spatially presented in a form of Video installation that organized in multiple layers different types of information about Loutrotopos via texts, images, technical data, graphs, etc. penetrated to the research process and outcome. The research belongs to the field of “Art Based Research”.



+ + +
**Transformations in the
Architecture and Spatial Planning
of Spa Towns in South-Western
Poland in the European Context
(1945-1989)**
+ + +
+ + +



Transformations in the Architecture and Spatial Planning of Spa Towns in South-Western Poland in the European Context (1945-1989)

Authors

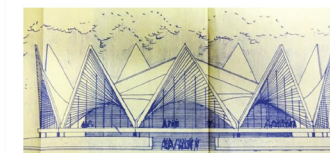
Damian Zajac

Institution

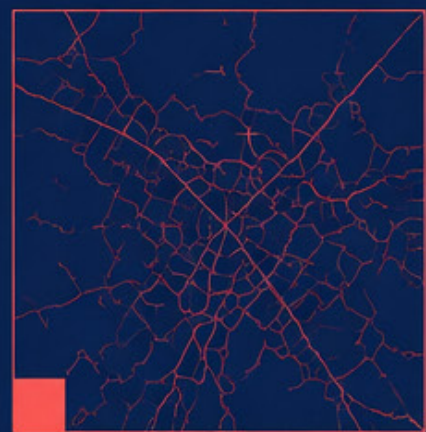
Institute of Art History,
University of Wrocław,
Poland

My doctoral project focuses on transformations in the architecture and spatial layouts of spa towns located in two regions of south-western Poland: Lower Silesia and Kłodzko Land, between 1945 and 1989. In 1945, almost the entire territory of these regions became part of Poland, forming part of the country's so-called Western and Northern Territories.

The project addresses several key issues. The first concerns transformations of pre-war architecture, including the restoration, rebuilding, reconstruction, and redevelopment of spa buildings. Another aspect explored in the dissertation is post-war architecture in historical spa towns. This includes sanatoriums, hospitals, hotels and other types of buildings. Most of them were built between the 1960s and the 1980s, with the 1970s marking a period of intensive construction activity. The dissertation also investigates transformations in the spatial layouts of spa towns. Finally, an important part of the research is the broader European context, including countries located on both the western and eastern sides of the Iron Curtain. Through comparative analysis, the project identifies similarities and differences between spa-town transformations in south-western Poland and those in other European countries. This allows me to address the question of which ideas related to spa architecture and spatial planning transformations were specific to south-western Poland.



**Therapeutic
Landscapes
in Spa
Environments:
Reframing
the Health-
Promoting
Value of
Spa Places**



Therapeutic Landscapes in Spa Environments: Reframing the Health-Promoting Value of Spa Places

Authors

Jana Walterová

Institution

Institute of Spa and Balneology, Karlovy Vary, Czech Republic

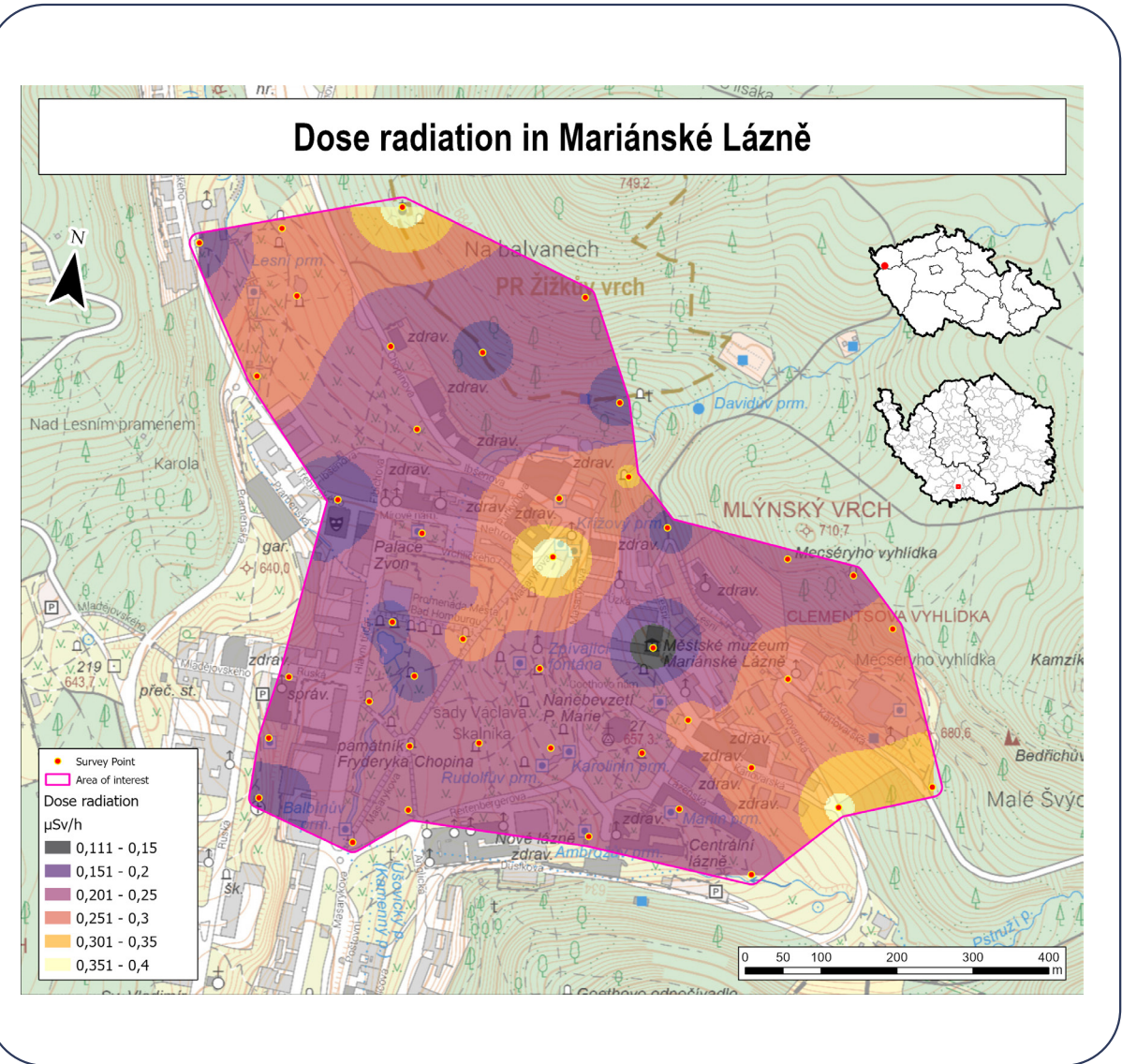
Funding

Funded by the "Spa Research Centre" project (CZ.10.01.01/00/22 001/0000261) supported by the Operational Programme Just Transition, European Just Transition Fund.

Spa settlements represent a distinctive convergence of natural healing resources, cultural heritage, and health-promoting environments. Our research revisits the concept of therapeutic landscapes within the spa context, exploring how the spatial, environmental, and cultural characteristics of spa settings contribute to their therapeutic potential and broader public health value. Attention is given to the health-promoting role of spa environments, including their capacity to support wellbeing, restoration, and preventive health outcomes, while acknowledging the significance of their historical and cultural context.

Grounded primarily in the context of Czech spa settlements; while considering wider European spa traditions, this research develops a conceptual framework for understanding spa environments as complex therapeutic systems shaped by interactions between landscape qualities, built form, natural resources, and social meanings. Ongoing empirical research seeks to further substantiate these theoretical perspectives through the systematic study of environmental characteristics that may influence the health-promoting potential of spa places.

By linking Therapeutic landscape theory with contemporary spa research, this work aims to contribute to discussions on the sustainable development, evidence-based valorisation, and health-promoting potential of spa settlements in Europe.



Govora
Heritage
Lab



Govora Heritage Lab

Authors

Irina Leca,
Radu Tîrcă,
Ştefania Tîrcă

Institution

Studiogovora,
Băile Govora,
România

Studiogovora is a nonprofit organization that transforms the spa heritage of Govora and the Oltenia region into a living resource for the community and for the future, through applied research, direct interventions, and cultural and educational programs that bring together experts, authorities, and citizens to promote the responsible development of local communities.

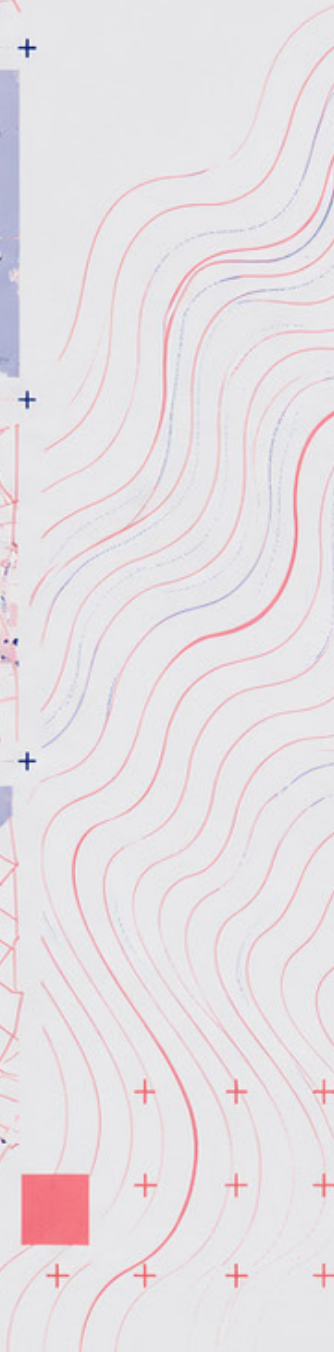
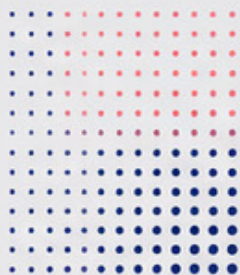
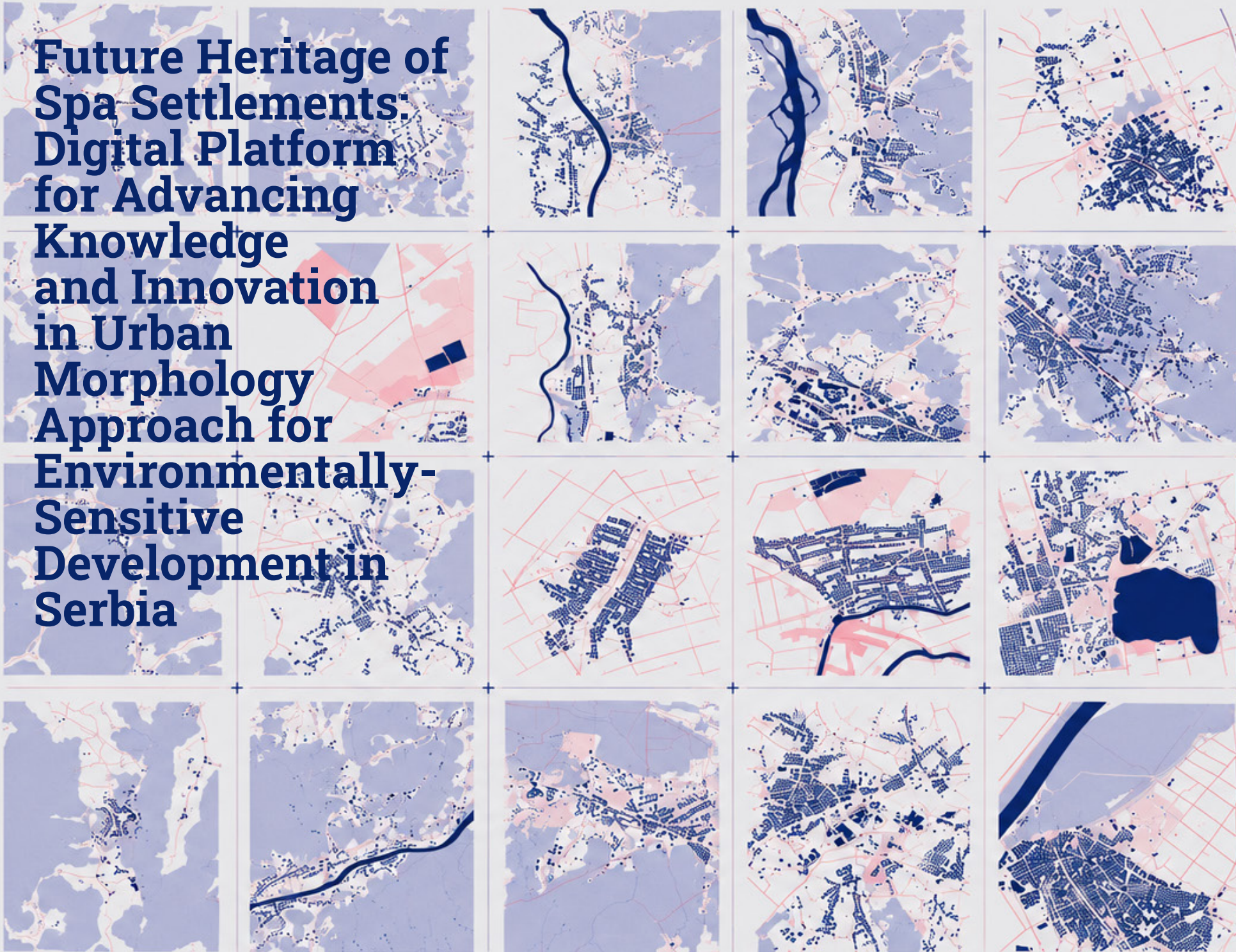
Through the Govora Heritage Lab programme, Studiogovora is reshaping how the city and its heritage are understood, shifting the focus from nostalgia toward practical action. By carrying out interdisciplinary research into heritage values and their historical management, the Lab creates a foundation for developing new approaches to contemporary challenges.

To support the preservation of the built environment, Studiogovora also provides guidance to property owners through several initiatives, including best-practice guidelines, a structural survey programme, advice on planning interventions, and a summer school dedicated to hands-on restoration. These efforts are reinforced through close cooperation with a national network of professionals aimed at strengthening policy tools and increasing local capacity for heritage management. Finally, to communicate these initiatives and promote a positive vision for the resort, the team focuses on interpreting and presenting the spa town's complex heritage values through comprehensive heritage interpretation.

The initiative has supported the conservation of historic structures and public spaces while increasing public engagement. It has strengthened awareness of heritage as a shared responsibility, encouraged community involvement through volunteering and donations, and improved collaboration between stakeholders, fostering stronger connections between people and places.



**Future Heritage of
Spa Settlements:
Digital Platform
for Advancing
Knowledge
and Innovation
in Urban
Morphology
Approach for
Environmentally-
Sensitive
Development in
Serbia**



Authors

Aleksandra Milovanović,
Mladen Pešić,
Stefan Janković,
Nikola Cvetković,
Uroš Šošević,
Verica Krstić,
Jelena Ristić Trajković,
Milica Milojević,
Ana Nikezić,
Dejan Simić,
Vladan Đokić

Institution

University of Belgrade

Future Heritage of Spa Settlements: Digital Platform for Advancing Knowledge and Innovation in Urban Morphology Approach for Environmentally-Sensitive Development in Serbia

Funding

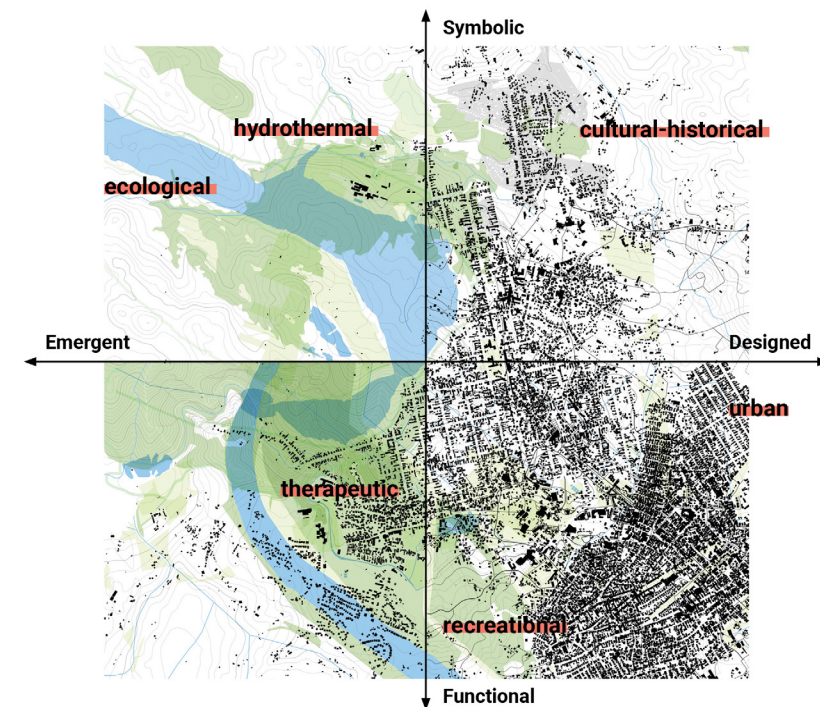
This research was supported by the Science Fund of the Republic of Serbia, Grant No. 7408, Future Heritage of Spa Settlements: Digital Platform for Advancing Knowledge and Innovation in Urban Morphology Approach for Environmentally Sensitive Development in Serbia – SPATTERN .

Spa settlements represent complex urban systems shaped through the long-term interactions between natural healing resources, landscape structures, therapeutic practices, cultural heritage, and processes of urban transformation. Despite their significant spatial, environmental, and socio-cultural value, contemporary spa settlements frequently face fragmented development, insufficient integration of heritage and environmental resources, and the absence of comprehensive analytical tools capable of supporting their sustainable future development.

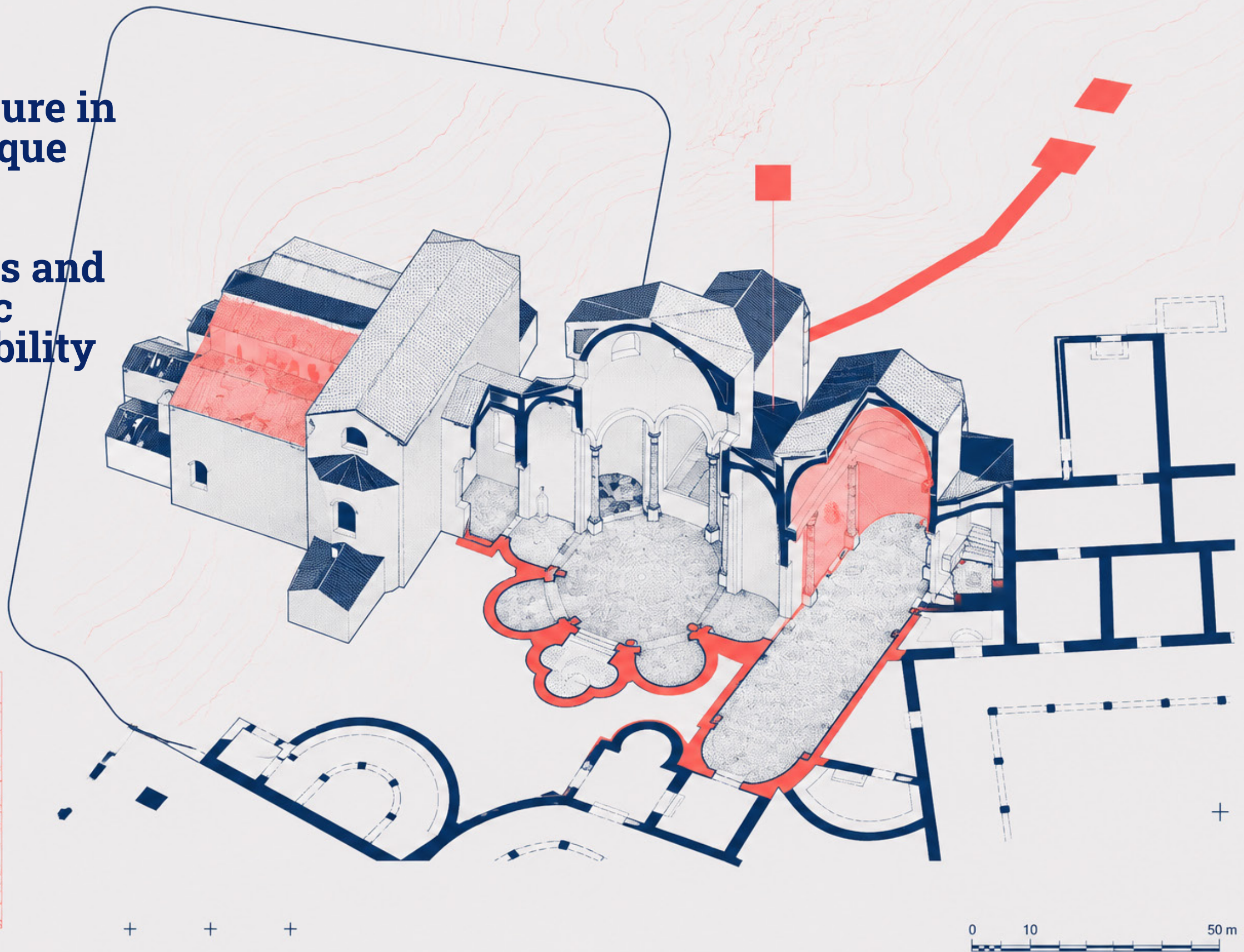
The SPATTERN project – Digital Platform for Advancing Knowledge and Innovation in Urban Morphology Approach for Environmentally-Sensitive Development of Serbian Spa Settlements – develops a comparative and interdisciplinary research framework dedicated to the analysis, interpretation, and visualization of urban patterns in spa settlements across Serbia. Grounded in urban morphology, heritage studies, environmental analysis, and digital spatial methodologies, the project investigates spa settlements as multi-layered and dynamic environments shaped by the interrelations between natural systems, built structures, public spaces, therapeutic landscapes, and everyday spatial practices.

The research integrates the analysis of 38 spa settlements in Serbia, including comparative investigations of selected role-model settlements, through the development of georeferenced spatial databases, typological classifications, and digital visualization tools. Particular attention is directed toward identifying recurring urban patterns, relationships between environmental sensitivity and urban development, as well as the potentials of digital platforms to support comparative research, planning processes, heritage interpretation, and future decision-making.

By combining urban morphology approaches with digital methods and interdisciplinary spatial analysis, the SPATTERN project aims to contribute to the understanding of spa settlements as future heritage environments and to support the development of more integrated, sustainable, and knowledge-based approaches to spa urbanism.



BALNEa. Baths' Architecture in Late Antique Sicily: Natural Resources and Economic Sustainability



BALNEa. Baths' Architecture in Late Antique Sicily: Natural Resources and Economic Sustainability

Authors

Claudia Lamanna

Institution

University of Bologna,
Italy

Funding

BALNEa is funded by the European Union under the Marie Skłodowska-Curie Actions (MSCA) programme within Horizon Europe. The project contributes to the EU's commitment to fostering research excellence, international mobility, and interdisciplinary training. Grant Agreement No.: 101198323

BALNEa – Baths' Architecture in Late Antique Sicily: Natural Resources and Economic Sustainability is a Marie Skłodowska-Curie Postdoctoral Fellowship project based at the University of Bologna (UNIBO), in collaboration with the Institute for Digital Exploration (University of South Florida) and the SECA laboratory at the University of Catania. Officially launched on February 1, 2026, the project investigates the decline of Roman public baths between Late Antiquity and the Early Middle Ages. While this decline has traditionally been attributed to the Christianization of the Roman Empire, BALNEa argues that economic, environmental, and energy-related factors played a pivotal role.

The research focuses on approximately 25 Late Antique bath complexes across Sicily – from Catania to Palermo, Syracuse to Piazza Armerina – combining archaeological survey, digital 3D modeling, material analysis, landscape studies, and open-source engineering simulations. These case studies are also situated within a broader comparative framework encompassing Greece, the Italian Peninsula, and North Africa.

BALNEa extends the concept of Architectural Energetics, examining not only the energy investment in construction but also the daily management of baths – heating, water use, and fuel supply – offering new insights for contemporary priorities such as energy transition and sustainable resource management.

The project will also produce an open-access digital catalogue featuring 2D drawings, 3D models, and FAIR-compliant datasets, fostering transparency and reproducibility across archaeology and building performance disciplines.

