

COMBINED CHILDREN'S INSTITUTION / KINDERGARTEN / "TESLA - SCIENCE FOR LIFE"

Kombinovana decja ustanova /Vrtic/ "Tesla - Nauka za zivot"

Office / Architect

DVA: STUDIO / Milan Djuric, Milka Gnjato, Aleksandru Vuja, Sladjana Milivojevic
www.dvastudio.rs

COLLABORATORS

CITYCOUNTRY

BELGRADE / SERBIA

Programme

EDUCATION

Placement

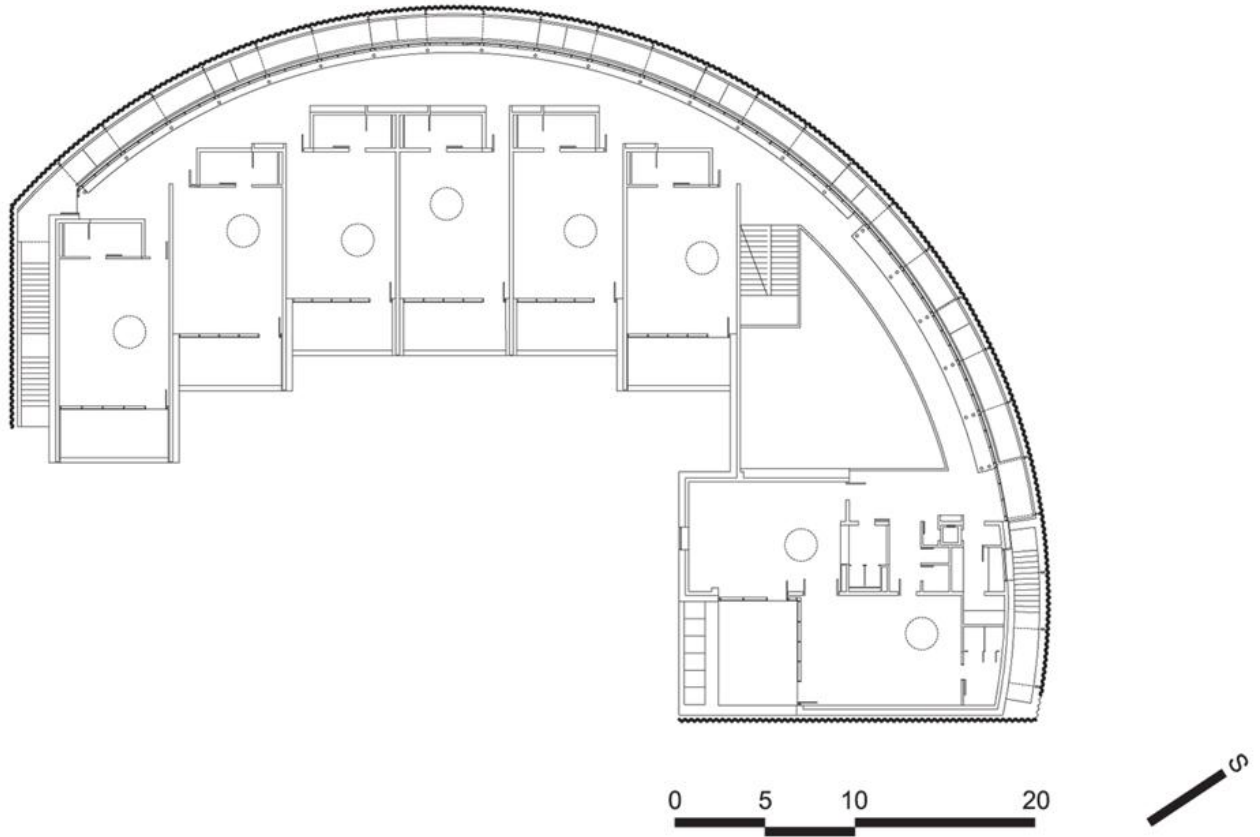
NOMINEE

EDITION

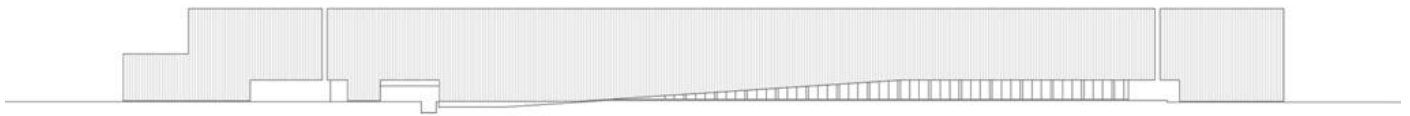
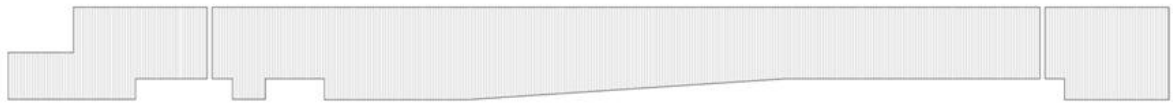
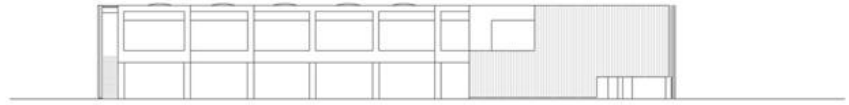
2015

Kindergarten / "Tesla – Science For Life". Belgrade, Serbia

Specific features of this location originate from the fact that primordial communist-modernist setting of the city extremely modernized throughout the principles of Le Corbusier's Ville Radieuse was interrupted by so called investor's (speculators) architecture during the past few decades. One of the outcomes of such conflict is the fact that new-formed, fragmented sites are in huge disproportion compared to existing structures and primarily, sites marked for the complementary functions such as educational facilities are in large scale undersized. So it is the case with this site for the kindergarten. That fact as well as the nearness of very intensive traffic were predominant in the process of designing. Circular form was the most appropriate as a response to the built environment as well as to the very close and very intensive traffic route. The element of contrast – duality and synthesis is part of the concept. From the perspective of the busy traffic route the building appears as rounded and neutral but from the entrance perspective large rectangular parts of the circle's body were cut off and architecture is structured and open. By introducing the outer circular ramp there was an extra-quality brought back into experience of the space, thus the children are enabled to experience correlation between built and non-built space and to experience space throughout emphasized motion through the building. The building was designed as a energy efficient one, therefore it is equipped with geothermal pump which provides for the whole building the full range of heating capacity. All openings and materials applied have features complying with highest standards for energy-efficient buildings. The building is oriented toward south-east in order to collect as much as possible sun energy and its curved back shape as well as its second façade made of corrugated tin lessen the flaws. Property area is 1,900 square meters on a plot of 3,600 square meters. There are 14 units for children, each one 55m² in surface, a common central area two levels high, which is about 150m² in surface and about 150m² of space for subsidiary functions such as kitchen, offices for teachers and nurses, toilets, showers and wardroom for employees, so as rooms for cleaning service.



TESLASCIENCEFORLIFESITEPLAN



TESLASCIENCEFORLIFEFACADES



TESLASCIENCEFORLIFE03

©ALEKSANDRU VUJA



TESLASCIENCEFORLIFE05

©RELJA IVANIĆ



TESLASCIENCEFORLIFE06

©RELJA IVANIĆ



TESLASCIENCEFORLIFE02

©RELJA IVANIĆ



TESLASCIENCEFORLIFE04A

©RELJA IVANIĆ



TESLASCIENCEFORLIFE01

©RELJA IVANIĆ